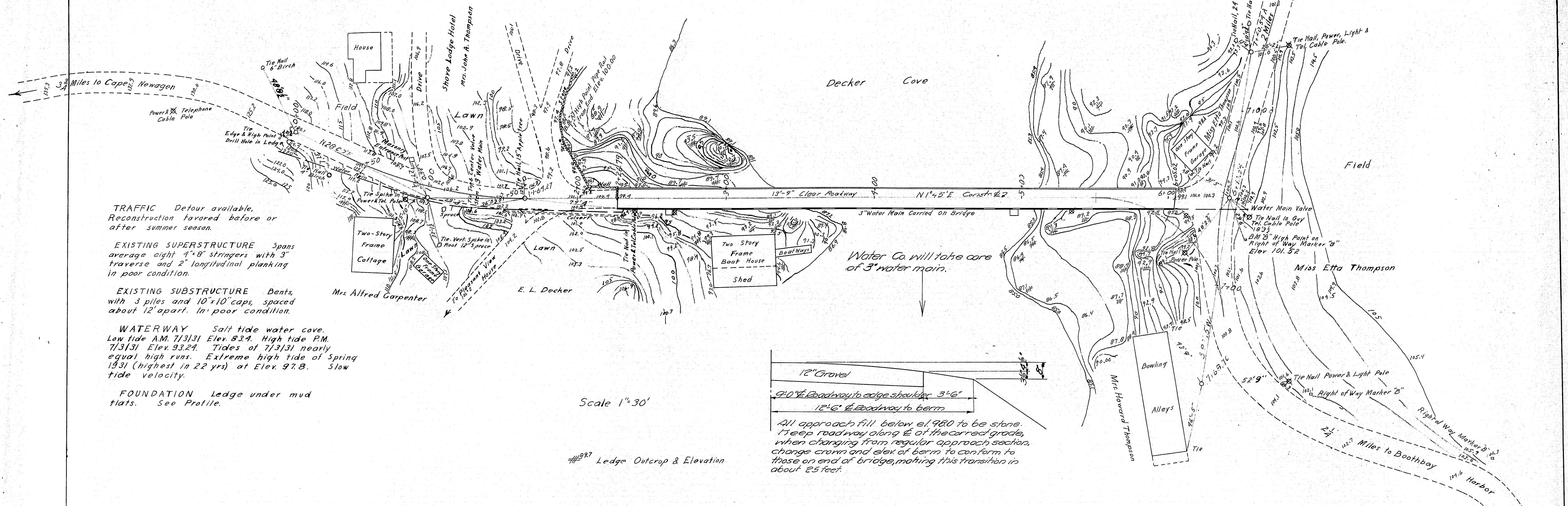


Mag. 1231 N



TRAFFIC Detour available.
Reconstruction favored before or
after summer season.

EXISTING SUPERSTRUCTURE Spans
average eight 4'x8' stringers with 3"
traverse and 2' longitudinal planking
in poor condition.

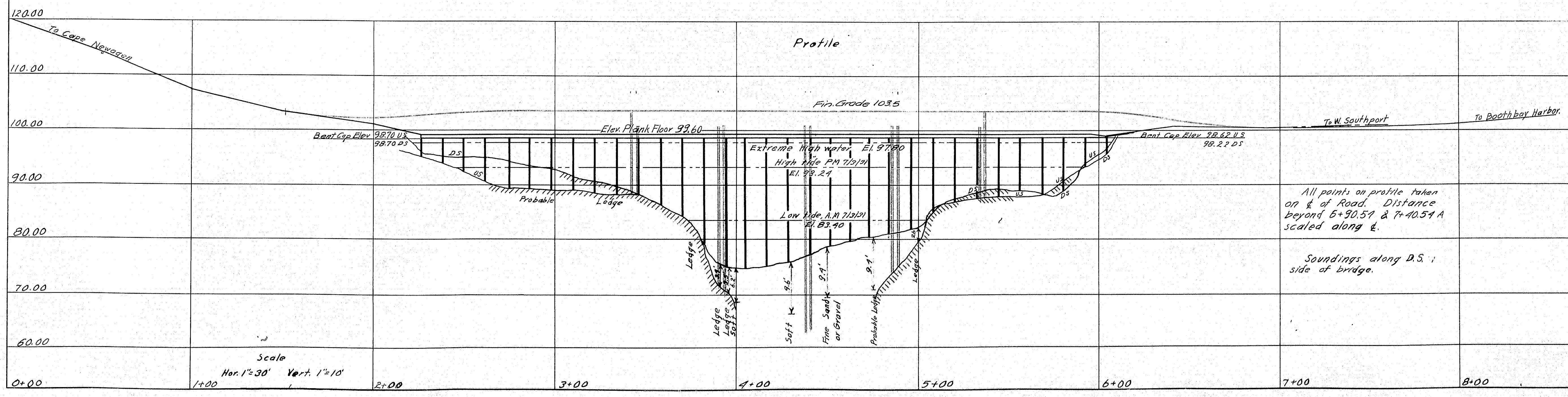
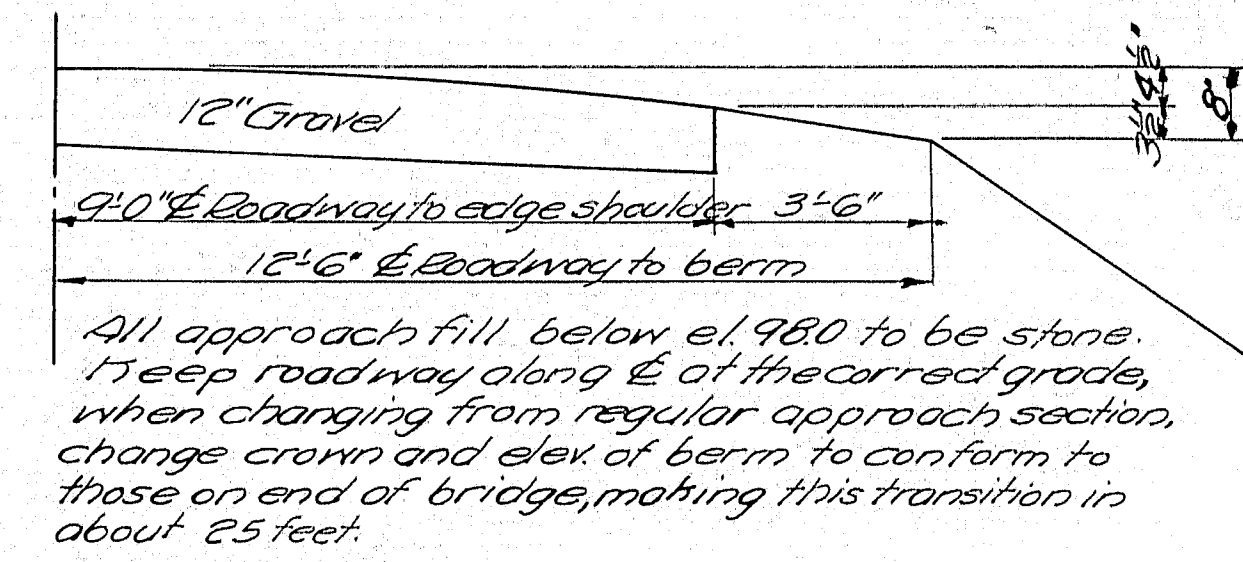
EXISTING SUBSTRUCTURE Bents
with 3 piles and 10'x10' caps, spaced
about 12' apart. In poor condition.

WATERWAY Salt tide water cove.
Low tide AM 7/3/31 Elev. 83.4. High tide PM.
7/3/31 Elev. 93.24. Tides of 7/3/31 nearly
equal high runs. Extreme high tide of Spring
1931 (highest in 22 yrs) at Elev. 97.8. Slow
tide velocity.

FOUNDATION Ledge under mud
flats. See Profile.

Scale 1"=30'

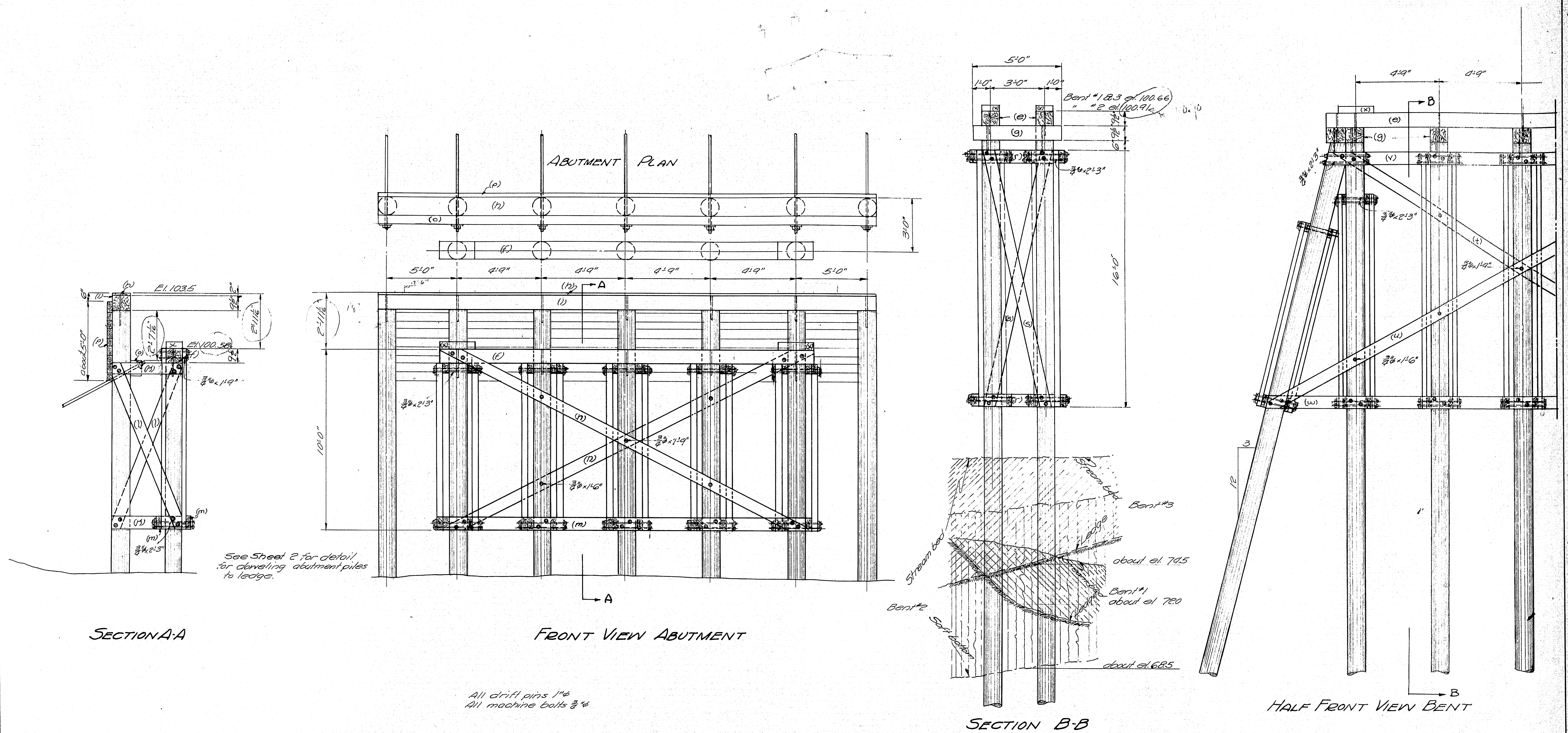
##927 Ledge Outcrop & Elevation



All points on profile taken
on E. of Road. Distance
beyond 5+90.51 & 7+40.51 A
scaled along E.

Soundings along D.S. ;
side of bridge.

MAINE HIGHWAY COMMISSION
BRIDGE DIVISION
THOMPSON BRIDGE
OVER
DECKER COVE
IN THE TOWN OF
SOUTHPORT
COUNTY OF
LINCOLN
SURVEY
SHEET 1 OF 4 AUGUSTA, ME. JULY 13, 1931



Brookfield
v. 9.8.

0 1 2 3 4 5 INCHES

Town 08.15
Bridge 2848

Maine Highway Commission
Bridge Division
THOMPSON BRIDGE
over
DECKER COVE
in the town of
SOUTHPORT
LINCOLN COUNTY
ABUTMENT & BENT DETAILS
Sheet 3 of 4 August 1933, Sept 1933

18-58

